

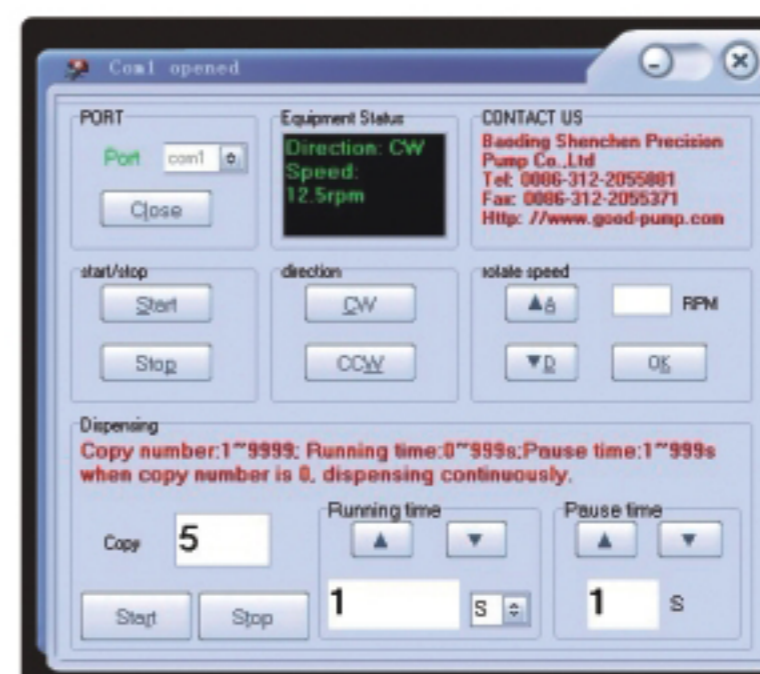


Basic Peristaltic Pump

BT100N



Model Number | BT100N



Features

- | Plastic coated metal housing, compact structure.
- | Timing function, time range 0.5s–999s, can be used for simple dispense.
- | [RS232, RS485 Communication Interface.](#)
- | Support Shenchen communication protocol or standard Modbus communication protocol(RTU mode).

Technical Specifications

Flow rate range	0.000829~570 mL/min	Start/stop, reversing signal	Passive switch signal, such as foot pedal Active switch signal: 5V,12V,24V for option
Speed resolution	0–100rpm, 0.1rpm; 100–600rpm, 1rpm	Communication interface	RS232(standard),Shenchen-N232 Communication protocol; RS485(optional), Modbus protocol(RTU mode)
Testing time range	0.5 s-999 s	Power supply	AC 220V±10% 50Hz/60Hz (standard) AC 110V±10% 50Hz/60Hz (optional)
Outlet pressure	0.8~1.0 mm wall thickness tubing: 0.1Mpa; 1.6~2.4mm wall thickness tubing:0.1~0.27Mpa	Drive dimension	183×131×194mm
Display	LED Display	Drive weight	4.20 kg
Control method	Mechanical keypad	Power consumption	< 50W
Keypad lifetime	300,000 times	Condition temperature	0-40°C
External speed control signal	0–5V(standard), 0–10V, 4–20mA(optional)	IP rate	IP31
Relative humidity	< 80%		

Product Composition and Flow Rate Range

Standard Peristaltic Pump		Pump Head & Flow Rate (mL/min)			
		YZ1515x	YZ2515x	MC1~MC12(10)	MC1~MC12(6)
Drive & speed	Tubing	13 ^ø , 14 ^ø , 19 ^ø , 16 ^ø , 25 ^ø , 17 ^ø , 18 ^ø	15 ^ø , 24 ^ø	Inner diameter: 0.13–3.17mm Wall thickness: 0.8–1mm	
BT100N	0.5-150rpm	0.035~570	0.85~435	0.000829–49(suggestion working speed ≤ 150rpm)	0.000925–65(suggestion working speed ≤ 150rpm)

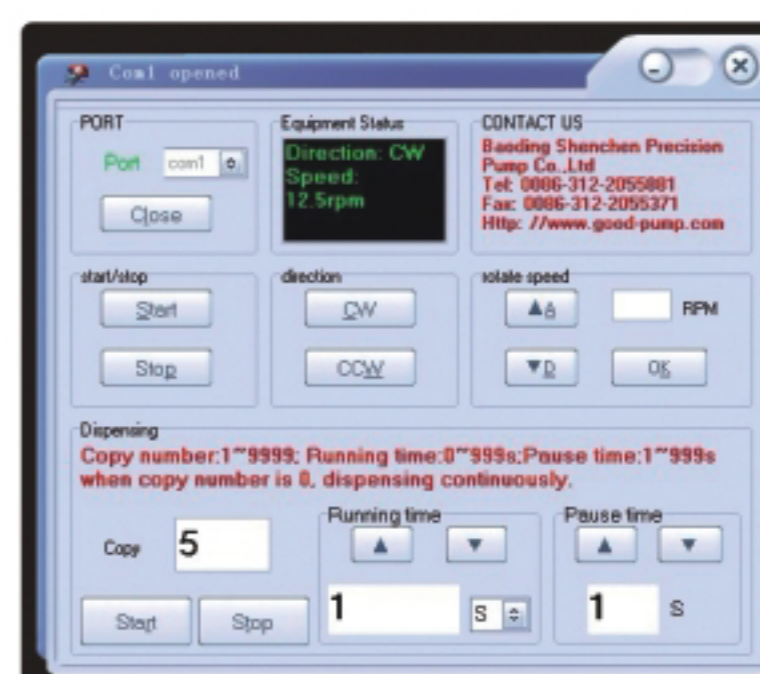


Basic Peristaltic Pump

BT300N



Model Number | BT300N



Features

- | Plastic coated metal housing, compact structure.
- | Timing function, time range 0.5s–999s, can be used for simple dispense.
- | RS232, RS485 Communication Interface.
- | Support Shencheng communication protocol or standard Modbus communication protocol(RTU mode).

Technical Specifications

Flow rate range	0.000829~1330 mL/min	Start/stop, reversing signal	Passive switch signal, such as foot pedal Active switch signal: 5V,12V,24V for option
Speed resolution	0–100rpm, 0.1rpm; 100–600rpm, 1rpm	Communication interface	RS232(standard),Shencheng-N232 Communication protocol; RS485(optional), Modbus protocol(RTU mode)
Testing time range	0.5 s-999 s	Power supply	AC 220V±10% 50Hz/60Hz (standard) AC 110V±10% 50Hz/60Hz (optional)
Outlet pressure	0.8~1.0 mm wall thickness tubing: 0.1Mpa; 1.6~2.4mm wall thickness tubing:0.1~0.27Mpa	Drive dimension	183×131×194mm
Display	LED Display	Drive weight	4.20 kg
Control method	Mechanical keypad	Power consumption	< 50W
Keypad lifetime	300,000 times	Condition temperature	0-40°C
External speed control signal	0–5V(standard), 0–10V, 4–20mA(optional)	IP rate	IP31
Relative humidity	< 80%		

Product Composition and Flow Rate Range

Standard Peristaltic Pump		Pump Head & Flow Rate (mL/min)			
		YZ1515x	YZ2515x	MC1~MC12(10)	MC1~MC12(6)
Drive & speed	Tubing	13°, 14°, 19°, 16°, 25°, 17°, 18°	15°, 24°	Inner diameter: 0.13–3.17mm Wall thickness: 0.8–1mm	
BT300N	0.5-350rpm	0.035~1330	0.85~1015	0.000829–49(suggestion working speed ≤ 150rpm)	0.000925–65(suggestion working speed ≤ 150rpm)

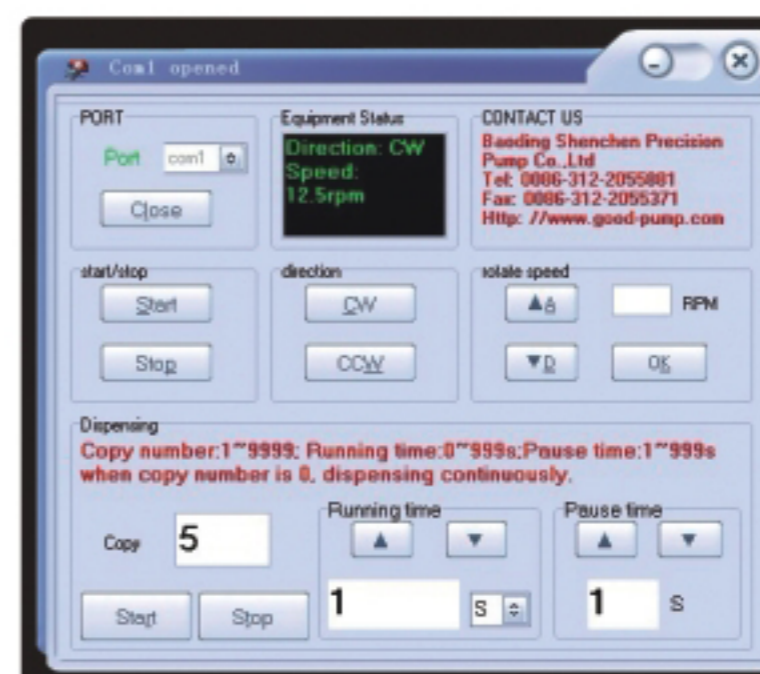


Basic Peristaltic Pump

BT600N



Model Number | BT600N



Features

- | Plastic coated metal housing, compact structure.
- | Timing function, time range 0.5s–999s, can be used for simple dispense.
- | [RS232, RS485 Communication Interface.](#)
- | Support Shenchen communication protocol or standard Modbus communication protocol(RTU mode).

Technical Specifications

Flow rate range	0.000829~2280 mL/min	Start/stop, reversing signal	Passive switch signal, such as foot pedal Active switch signal: 5V,12V,24V for option
Speed resolution	0–100rpm, 0.1rpm; 100–600rpm, 1rpm	Communication interface	RS232(standard),Shenchen-N232 Communication protocol; RS485(optional), Modbus protocol(RTU mode)
Testing time range	0.5 s-999 s	Power supply	AC 220V±10% 50Hz/60Hz (standard) AC 110V±10% 50Hz/60Hz (optional)
Outlet pressure	0.8~1.0 mm wall thickness tubing: 0.1Mpa; 1.6~2.4mm wall thickness tubing:0.1~0.27Mpa	Drive dimension	183×131×194mm
Display	LED Display	Drive weight	4.20 kg
Control method	Mechanical keypad	Power consumption	< 50W
Keypad lifetime	300,000 times	Condition temperature	0-40°C
External speed control signal	0–5V(standard), 0–10V, 4–20mA(optional)	IP rate	IP31
Relative humidity	< 80%		

Product Composition and Flow Rate Range

Standard Peristaltic Pump		Pump Head & Flow Rate (mL/min)			
		YZ1515x	YZ2515x	MC1~MC12(10)	MC1~MC12(6)
Drive & speed	Tubing	13°, 14°, 19°, 16°, 25°, 17°, 18°	15°, 24°	Inner diameter: 0.13–3.17mm Wall thickness: 0.8–1mm	
BT600N	0.5-600rpm	0.035~2280	0.85~1740	0.000829–49(suggestion working speed ≤ 150rpm)	0.000925–65(suggestion working speed ≤ 150rpm)