



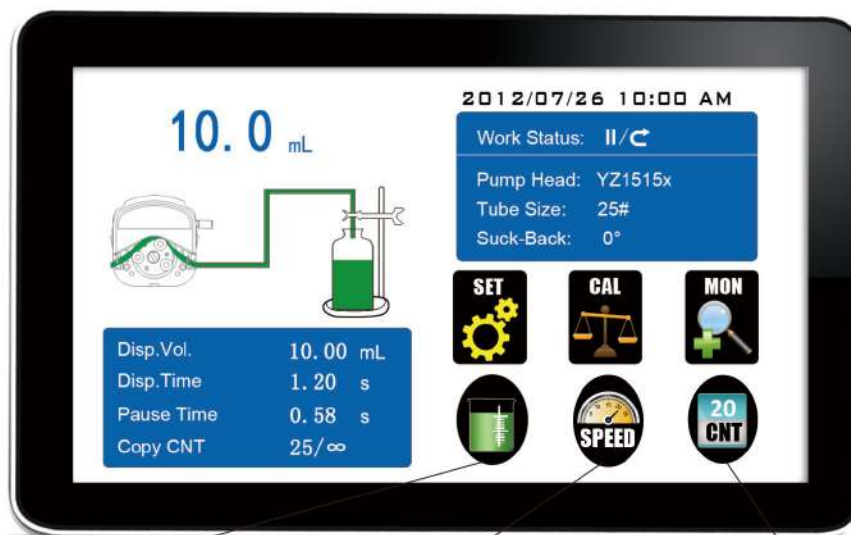
Intelligent, just for easier.

Technical Specifications

Flow rate range	LabF1/F1: 0.00166~570mL/min LabF3/F3: 0.00166~1330mL/min LabF6/F6: 0.00166~2280mL/min	Start/stop, direction signal	Passive switch signal, such as foot pedal switch; Active switch signal: 5V, 12V and 24V for option
Speed range	1-600rpm	Output interface	Output motor working status (Open-Collector output)
Speed resolution	0.01rpm	Communication interface	RS232, RS485 support Modbus protocol (RTU mode)
Dispensing volume range	0.1-9999.99mL	Power supply	AC 220V±10% 50Hz/60Hz (Standard) AC 110V±10% 50Hz/60Hz (Optional)
Dispensing volume resolution	0.01mL	Outlet pressure	0.1Mpa(0.8~1.0mm wall thickness tubing) 0.1~0.27Mpa(1.6~2.4mm wall thickness tubing)
Dispensing time	0.1-9999.99s	Drive dimension (L×W×H)	LabF Series: 261.4×157.3×236.9 mm F Series: 212×152×243mm
Pause time	0.1-9999.99s	Drive weight	LabF Series: 4.40 kg F Series: 4.20 kg
Time resolution	0.01s	Power consumption	<50W
Copy numbers	1-9999 times, setting'0'means unlimited	Condition temperature	0-40°C
Back suction angle	0-360°	Relative humidity	< 80%
Dispensing accuracy	<±0.5%	IP rate	IP31
Motor type	Stepper motor		
Display	Industrial grade 4.3" color LCD display		
Control method	Touch screen and Mechanical keypad		
Keypad lifetime	300,000 times		

Product Composition and Flow Rate Range

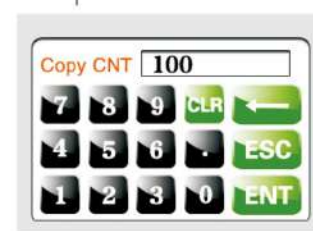
Dispensing Peristaltic Pump		Pump Head & Flow Rates (mL/min)			
		YZ1515x	YZ2515x	MC1~MC12(10)	MC1~MC12(6)
Drive & speed	Tubing	13", 14", 19", 16" 25", 17", 18"	15", 24"	Inner diameter: 0.13-3.17mm Wall thickness: 0.8-1mm	
LabF1/F1	1-150rpm	0.07~570	1.7~435	0.00166-49(suggestion working speed≤150rpm)	0.00185-65(suggestion working speed≤150rpm)
LabF3/F3	1-350rpm	0.07~1330	1.7~1015		
LabF6/F6	1-600rpm	0.07~2280	1.7~1740		



Volume dispensing interface



Speed dispensing interface



Repeat numbers interface